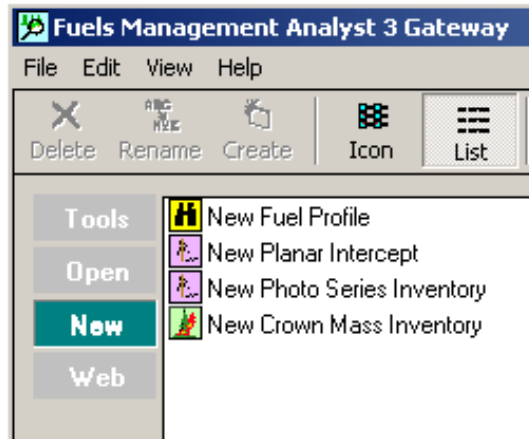
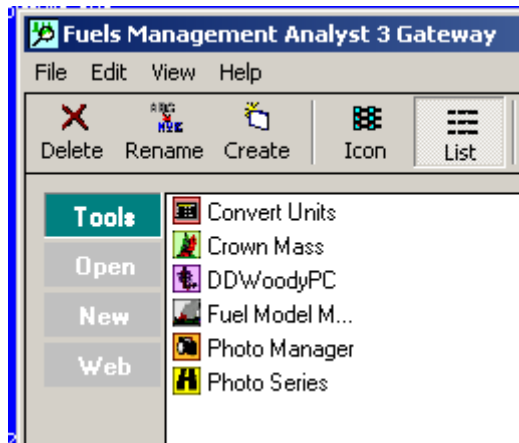
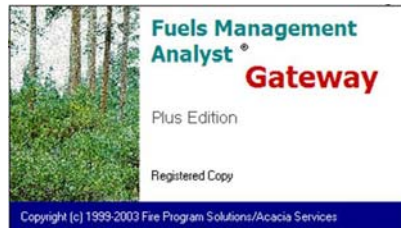


Fuels Management Analyst Suite FMAPlus®








Users' Guide To Using the Gateway Program



05/01/2005

Table of Contents

Table of Contents	i
Gateway Icon Description Summary	ii
Technical Support	ii
Welcome to the Gateway Program	1
The Gateway Program Interface	1
Gateway Menu and Toolbar	2
The New Tab.....	4
The Open Tab	4
The Tools Tab.....	5
The Web Tab.....	7

ICON Descriptions Summary	
	Delete File, Tools Shortcut or web Shortcut
	Rename File, Tools Shortcut or Web Shortcut
	Create Tools Shortcut or Web Shortcut
	Toggle Icon View
	Toggle List View
	Exit
	Help

Contacting Us

We enjoy hearing from the users of FMAPlus.

Fire Program Solutions
 17067 Hood Court
 Sandy, Oregon 97055
 Email: dcarlton1@aol.com
 Phone: (503) 668-1390
 FAX: (503) 668-1392
 Web Site: www.fireps.com

Technical Support

[FMAPlus 3 Home Page](http://www.fireps.com/fmanalyst3/)

<http://www.fireps.com/fmanalyst3/>

FMA[®], FMAPlus[®], DDWoodyPC[®], PSExplorer[®] and CrownMass[®] are all registered trademarks of Fire Program Solutions, LLC and Acacia Services.

Email Support

support@fireps.com

© Fire Program Solutions/Acacia Services, 1999-2005

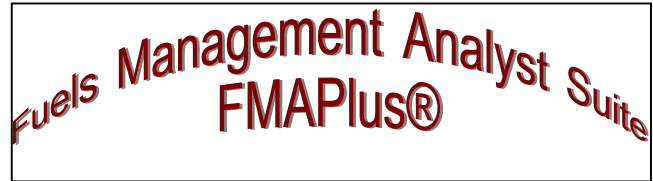
“No portion of this publication may be reproduced, stored in a retrieval system or transmitted in any form, or by any means electronic, mechanical, photocopied, recorded or otherwise, without the prior written permission of Fire Program Solutions, LLC or Acacia Services.”

Welcome to the Gateway Program!

Introduction

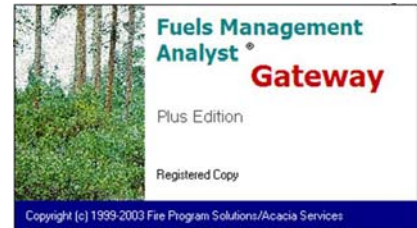
The Fuels Management Analyst Suite of programs facilitates:

- The viewing of published and locally generated Photo Series
- The searching of published and locally generated Photo Series for photos that meet defined criteria
- The reduction of fuels inventory data gathered using Photo Series or the Planar Intercept Method
- The estimation of crown weights of trees
- The assessment of potential fire behavior and effects of fires burning in different fuel profiles



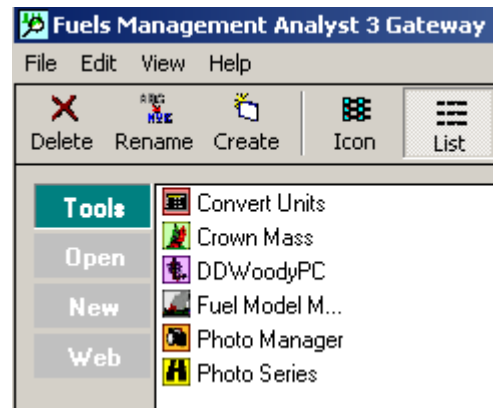
The Gateway Program Analyst Interface

From the Gateway program interface, it is possible to access all applications in FMAPlus® and perform a number of common operations. The interface is comprised of four basic zones defined by the following tabs:



The Tools Tab

The Tools Tab currently contains icons to facilitate the starting of the programs in FMAPlus. The user can add shortcuts to other programs such as BehavePlus.



The Open Tab

The Open Tab allows the user to Open, Rename, and Delete data files created by the DDWoodyPC®, PSExplorer® or CrownMass® programs.

The New Tab

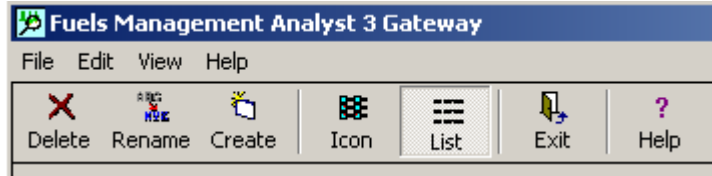
The New Tab allows the user to start new DDWoodyPC inventories, to describe a new fuel profile using PSExplorer or start a new CrownMass inventory.

The Web Tab

The Web Tab contains links to FMAPlus support and other fuels management related links. In addition, the user can add and manage links to Internet sites.

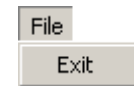
Gateway Menu and Toolbar

In addition, there are Menu and Toolbar items that provide a means to manage and display items. The Gateway program menu and toolbar contain the following items:



The File Menu

The Exit menu closes the Gateway program.

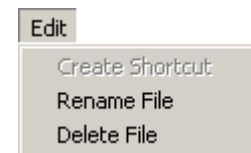


The Edit Menu

This menu changes based upon tab (Open, Tools or Web) is selected.

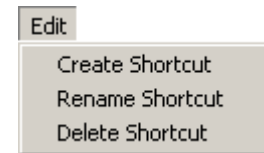
With the Open Tab selected, the Edit Menu allows the user to:

- Rename File. Rename a File, Tool Shortcut, or Web Shortcut
- Delete File. Delete a File, Tool Shortcut, or Web Shortcut



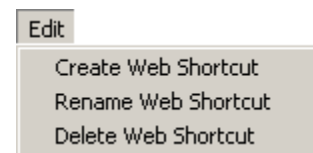
With the Tools Tab selected, the Edit Menu allows the user to:

- Create Shortcut. Create a Tool Shortcut
- Rename Shortcut. Rename a Tool Shortcut
- Delete Shortcut. Delete a Tool Shortcut






With the Web Tab selected, the Edit Menu allows the user to:

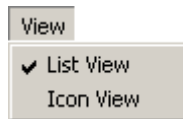
- Create Web Shortcut. Create a Web Shortcut
- Rename Web Shortcut. Rename a Web Shortcut
- Delete Web Shortcut. Delete a Web Shortcut



The user can also activate the Create, Delete or Rename features using their icons on the Toolbar.

- Create, 
- Delete or 
- Rename 

The View Menu



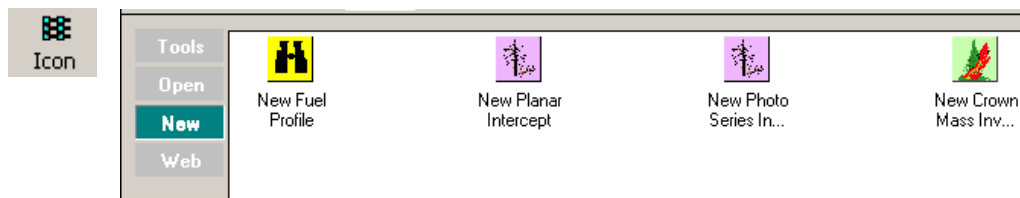
List View

This menu item displays items in a list format.

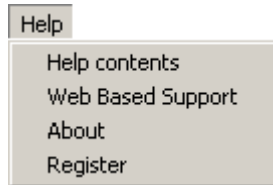


Icon View

This menu item displays items as large icons.



The Help Menu



Help Contents

This menu item displays the help file.

Web Based Support

If the user has an active connection of the Internet, clicking on Web Based Support will take the user to the Fuels Management Analyst Support Page.

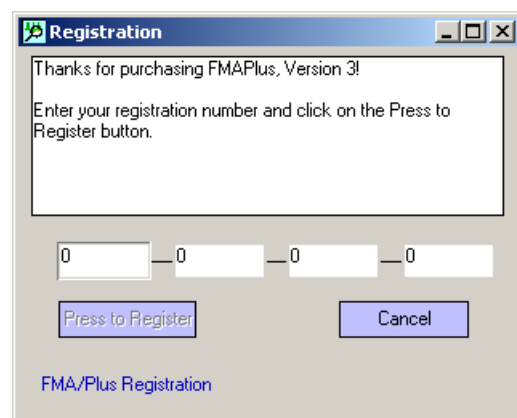
About

The screen also displays the version number of the Gateway program and the FMAPlus registration number.

Register

Enter the registration number supplied with FMAPlus 3. When the correct registration number is entered, the **Press to Register** button will be enabled. Press it to complete registration.

If FMAPlus is not registered, then the Main Menu will have the items Register Here and Ordering Information on the menu.



The New Tab

From the New tab the user can initiate:

- A new fuel profile using the PSExplorer program
- A new planar intercept inventory using the DDWoodyPC program
- A new photo series inventory using the DDWoodyPC program
- A new crown weight inventory using the CrownMass program



Double click the desired icon and the appropriate program will be started. Once the user names the database file, the desired activity can occur.

The Open Tab

The open tab contains files created or edited by DDWoodyPC, PSExplorer or CrownMass.

Tools	Recently Used Files	Last Modified	Type
Open New Web	CM_Example.cm3	1/19/2004 7:04:34 PM	Crown Mass Inventory
	PI_Example.di3	12/29/2003 6:41:20 AM	Planar Intercept Inventory
	PI_Example_With_Lengths.di3	12/29/2003 6:41:44 AM	Planar Intercept Inventory
	PS_Example.ds3	12/29/2003 6:50:52 AM	Photo Series Inventory
	PSE_Example.pr3	12/19/2003 8:41:00 PM	Fuel Profile

From this tab, the user can:

- Open a File by double-clicking on the file's icon or the file's name
- Delete a File by highlighting the file and clicking the **Delete** button or selecting Delete File under the Edit menu
- Rename a File by highlighting the file and clicking the **Rename** tool button or selecting the Rename File under the Edit Menu.
- Sort the Files by clicking on the column header.



Recently Used Files	Last Modified	Type	Directory
---------------------	---------------	------	-----------

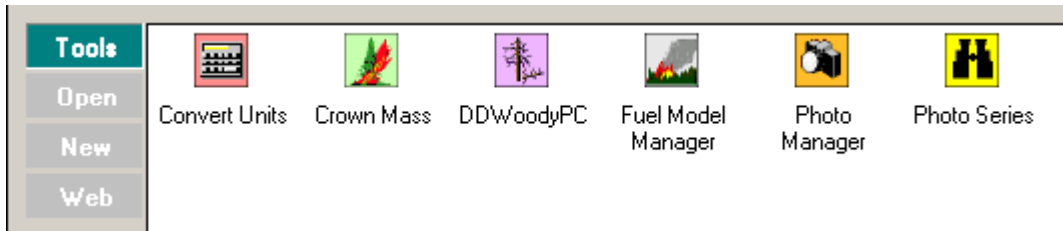
This allows the user to sort files by name, type, date, and directory.

If the desired file is not displayed, the **Browse** button will open a window that allows the user to locate the desired data file.



The Tools Tab

The Tools Tab contains shortcuts to the DDWoodyPC, PSExplorer (Photo Series), Photo Manager and CrownMass programs. It also contains icons for the standalone programs UnitVert (Convert Units) and FMMgr (Fuel Model Manager). In addition, the user can add and manage custom shortcuts. Shortcuts are Window's links to files that reside on the computer. Using this functionality enables the user to centralize access to other applications on the Gateway Tools screen.



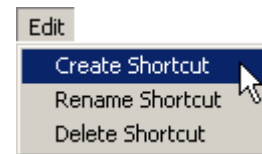
From this tab, the user may:

- Access the tool by double clicking on the tool's icon
- Create a tool shortcut by click on the **Create Shortcut** button



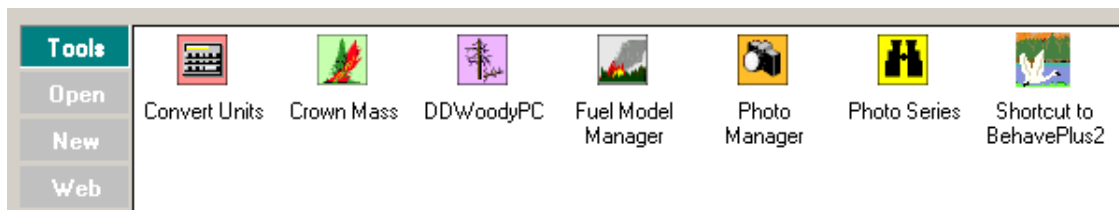
or

by clicking on the Create Shortcut menu item on the Edit menu.



This will open a window allowing the user to find the application for which the shortcut is to be made. Double-click on the exe file to create the icon for the program desired.

For example, if the user wanted to create an icon for the BehavePlus (Version 2) program, the user would navigate to where the BehavePlus2.exe file exists and double-click on the file. The Shortcut to the BehavePlus program (icon) as shown below will appear.

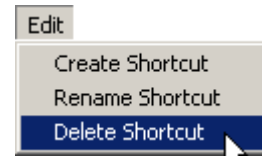


- Delete a Tool Shortcut by highlighting the shortcut and clicking the **Delete** button



or

By selecting Delete Shortcut from the Edit menu

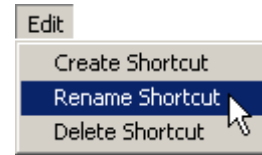


- Rename a Tool Shortcut by highlighting the shortcut and clicking the **Rename Tool** button on the Toolbar



or

By selecting the Rename Shortcut under the Edit Menu



Hot Tip

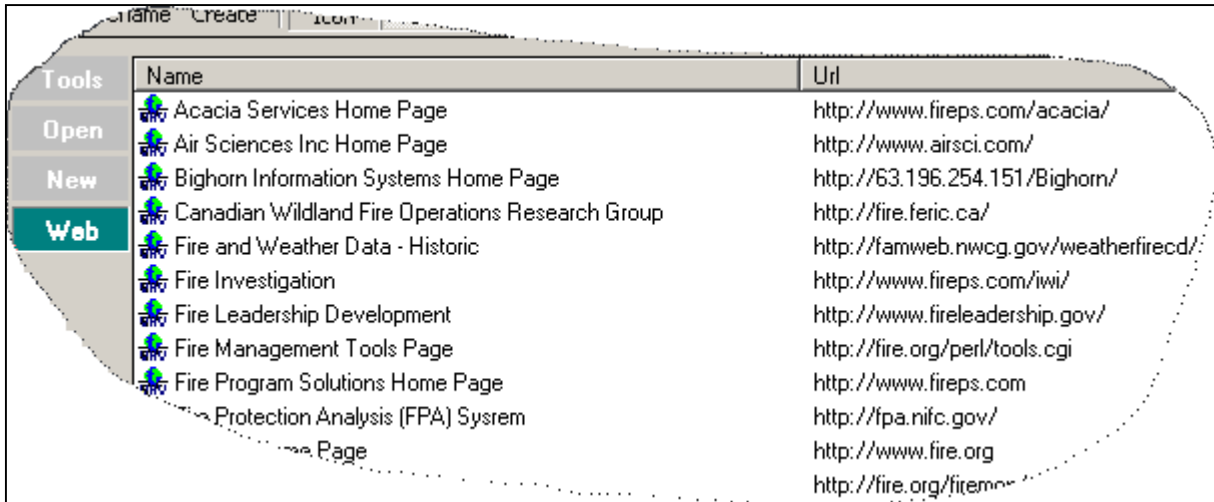


The user cannot delete or rename shortcuts to the DDWoodyPC, PSExplorer, Manage Photos, CrownMass, Convert Units or Fuel Model Manager programs.



The Web Tab

The web tab contains shortcuts to pages and sites on the Internet (Web) that relate to Fuels Management. In addition, the user can add and delete user defined Internet shortcuts. Internet shortcuts are similar to favorites in Internet browsers. Using this function enables the user to centralize access to Internet sites.



Name	Url
Acacia Services Home Page	http://www.fireps.com/acacia/
Air Sciences Inc Home Page	http://www.airsci.com/
Bighorn Information Systems Home Page	http://63.196.254.151/Bighorn/
Canadian Wildland Fire Operations Research Group	http://fire.feric.ca/
Fire and Weather Data - Historic	http://famweb.nwccg.gov/weatherfirecd/
Fire Investigation	http://www.fireps.com/iwi/
Fire Leadership Development	http://www.fireleadership.gov/
Fire Management Tools Page	http://fire.org/perl/tools.cgi
Fire Program Solutions Home Page	http://www.fireps.com
Protection Analysis (FPA) System	http://fpa.nifc.gov/
Fire Program Solutions Home Page	http://www.fire.org
Fire Program Solutions Home Page	http://fire.org/firemon

From this tab, the user can:

- Access the Web Site, double click on the site's icon



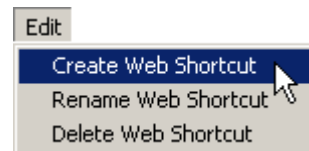
- Create a Web Shortcut

To create a web shortcut, click on the **Create** button on the Toolbar

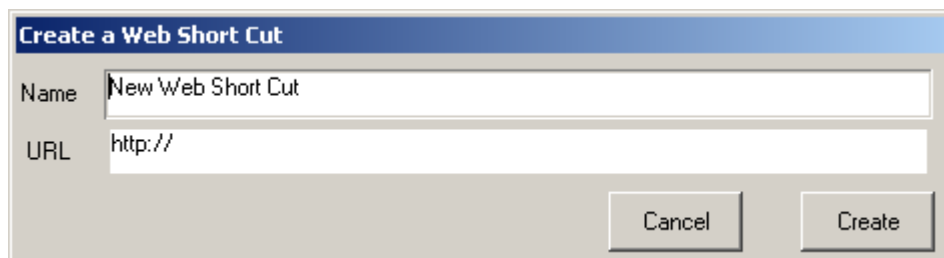


or

From the Edit Menu, select Create Web Shortcut menu item



This will open a window allowing the user to enter the address (URL) of the web site (See below).



Create a Web Short Cut

Name: New Web Short Cut

URL: http://

Buttons: Cancel, Create

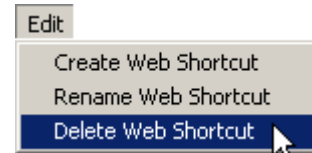
- Delete a Web Shortcut

To delete a web shortcut, click on the **Delete** button on the Toolbar

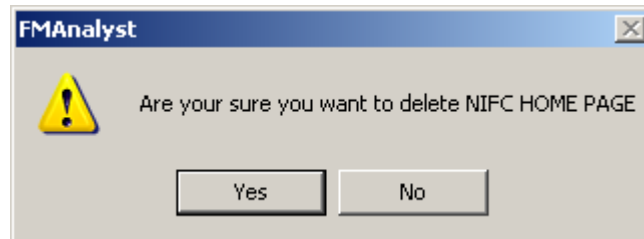


or

From the Edit Menu, select Delete Web Shortcut.



This will open a window requesting the user confirm the desire to delete the Web shortcut (See below).



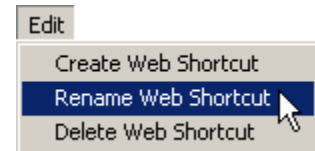
- Rename a Web Shortcut

To rename a web shortcut, click on the **Rename** button on the Toolbar



or

From the Edit Menu, select Rename Shortcut.



This will open a window allowing you to enter the address (URL) of the web site (See below).

