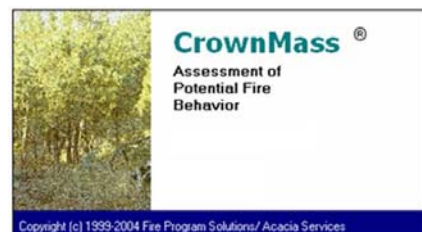
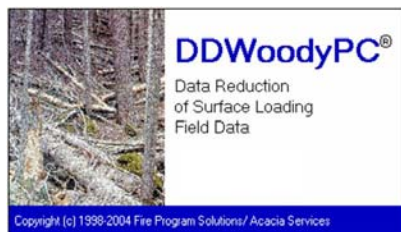
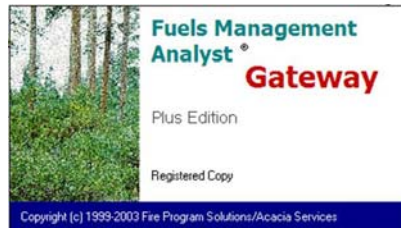


# Fuels Management Analyst Suite FMAPlus®

## Getting Started Program Installation, Updating and General Information



03/07/2016



# Table of Contents

Table of Contents .....	i
Contacting Us .....	ii
Technical Support .....	ii
Email Support .....	ii
Software License .....	iii
Welcome to (FMAPlus <sup>®</sup> ) .....	1
Installation Instruction Instructions for FMAPlus <sup>®</sup> .....	3
Program Registration .....	4
Activation and De-Activation of Photo Series Books .....	4
Storing the Installation CD-ROM .....	10
Updating Program Files .....	10

## Contacting Us

We enjoy hearing from the users of FMAPlus.

Fire Program Solutions  
17067 Hood Court  
Sandy, Oregon 97055  
Email: dcarlton1@aol.com  
Phone: (503) 668-1390  
FAX: (503) 668-1392  
Web Site: www.fireps.com

## Technical Support

Fuels Management Analyst Support Page  
<http://www.fireps.com/fmanalyst3/>

## Email Support

support@fireps.com



FMA<sup>®</sup>, FMAPlus<sup>®</sup>, DDWoodyPC<sup>®</sup>, PSExplorer<sup>®</sup> and CrownMass<sup>®</sup> are all registered trademarks of Fire Program Solutions, LLC and Acacia Services.

© Fire Program Solutions/Acacia Services, 1999-2016

“No portion of this publication may be reproduced, stored in a retrieval system or transmitted in any form, or by any means electronic, mechanical, photocopied, recorded or otherwise, without the prior written permission of Fire Program Solutions, LLC or Acacia Services.”

## **Welcome to Fuels Management Analyst Plus**

Copyright © 1999 - 2016 Fire Program Solutions, LCC & Acacia Services; All Rights Reserved

### **License**

WARNING THIS SOFTWARE IS PROTECTED BY U.S. COPYRIGHT LAW (TITLE 17 UNITED STATES CODE). UNAUTHORIZED REPRODUCTION AND/OR SALE MAY RESULT IN IMPRISONMENT OF UP TO ONE YEAR AND FINES OF UP TO \$100,000 (17 USC 506). COPYRIGHT INFRINGERS MAY ALSO BE SUBJECT TO CIVIL LIABILITY.

This software is being provided to you, the LICENSEE, by Fire Program Solutions, LLC & Acacia Services under the following license. By obtaining, using and/or copying this software, you agree that you have read, understood, and will comply with these terms and conditions:

This software may only be installed on one computer or workstation and one portable laptop computer owned or assigned to the licensee. Simultaneous use of the program on both computers is a violation of this license. If installed on a network server, each seat or workstation must have a license. This software may not be sold or incorporated into any product, which is sold without prior permission from the author.

### **DISCLAIMER**

This software carries no warranty, expressed or implied. The user assumes all risks, known or unknown, direct or indirect, which involve this software in any way.

LIMITED WARRANTY: THE SOFTWARE HEREIN ARE PROVIDED "AS IS" WITHOUT WARRANTY OF ANY KIND, EITHER EXPRESSED OR IMPLIED, BUT NOT LIMITED TO, THE IMPLIED WARRANTIES OF MERCHANTABILITY AND FITNESS FOR A PARTICULAR PURPOSE. THE USER MUST ASSUME THE ENTIRE RISK AS TO THE QUALITY AND PERFORMANCE OF THE SOFTWARE. SHOULD THE SOFTWARE PROVE DEFECTIVE, THE USER ASSUMES THE ENTIRE COST OF ALL NECESSARY SERVICING, REPAIR, OR CORRECTION. ANY LIABILITY OF THE SELLER WILL BE LIMITED EXCLUSIVELY TO PRODUCT REPLACEMENT OR REFUND OF PURCHASE PRICE. THIS WARRANTY GIVES YOU SPECIFIC LEGAL RIGHTS AND YOU MAY ALSO HAVE OTHER RIGHTS, WHICH VARY FROM STATE TO STATE.

LIMITATION OF LIABILITY: IN NO EVENT SHALL FIRE PROGRAM SOLUTIONS OR ACACIA SERVICES OR ANY OF THEIR AUTHORIZED DEALERS OR SUPPLIERS BE LIABLE TO YOU OR ANY OTHER PARTY FOR ANY DAMAGES WHATSOEVER (INCLUDING, WITHOUT LIMITATION, DAMAGES FOR LOSS OF BUSINESS PROFITS, LOSS OF SAVINGS, BUSINESS INTERRUPTION, LOSS OF BUSINESS INFORMATION, OR OTHER INCIDENTAL OR CONSEQUENTIAL DAMAGES) ARISING OUT OF THE USE OF OR INABILITY TO USE THIS SOFTWARE, EVEN IF FIRE PROGRAM SOLUTIONS OR ACACIA SERVICES HAS BEEN ADVISED OF THE POSSIBILITY OF SUCH DAMAGES. SOME STATES DO NOT ALLOW THE LIMITATION OR EXCLUSION OF LIABILITY FOR INCIDENTAL OR CONSEQUENTIAL DAMAGES SO THE ABOVE LIMITATION OR EXCLUSION MAY NOT APPLY TO YOU.



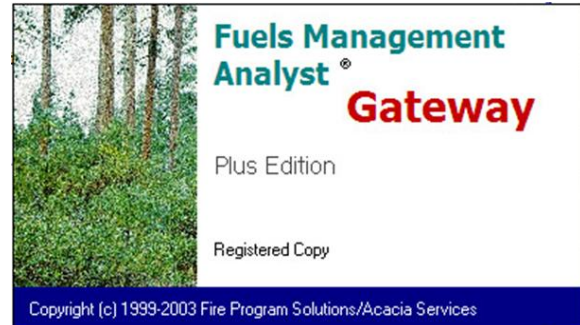
# Welcome to Fuels Management Analyst Suite (FMAPlus®)!

Thanks for Purchasing FMAPlus!

Here is your order for Fuels Management Analyst Plus (FMAPlus). FMAPlus is a suite of tools.

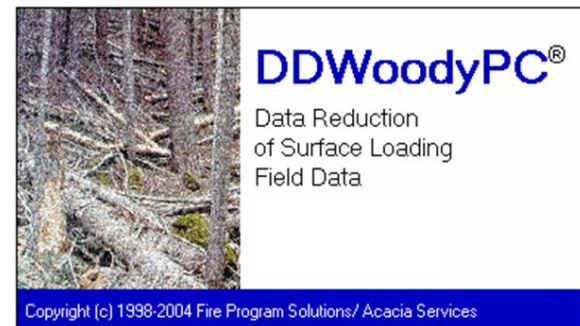
The Gateway program provides an interface to:

- DDWoodyPC® ,
- PSExplorer® and
- CrownMass®
- Other Programs within FMAPlus
- Registration of the software



Shortcuts to other programs and Hot Links to Internet pages can be created.

The DDWoodyPC program was developed to provide fuels managers with the ability to reduce inventory data taken in the field via photo series or via planar intercept methods.



The PSExplorer program facilitates:

- The viewing of published and locally generated Photo Series and
- The searching of published and locally generated Photo Series for photos that meet defined criteria.



Searching for photos based on defined criteria is done via database queries. Four types of queries are available:

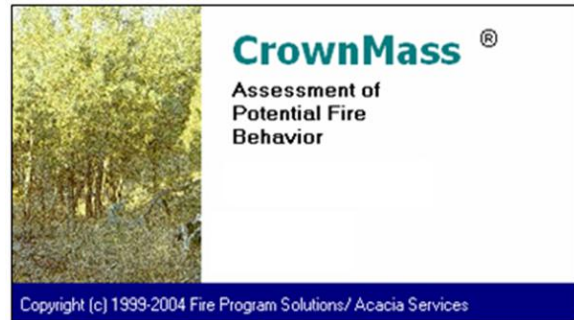
- Query by Photo Series Book
- Query by Vegetation Type, Activity Type and Total Fuel Loading
- Query by Vegetation Type, Activity Type, 0" to 3.0" Fuel Loading and 3+" Fuel Loading
- Query by Fire Behavior (FBPS) or Danger Rating (NFDRS) Fuel Model

PSExplorer contains over 700 online photos from 20 photo series allowing the user to:

- Develop fuel profiles
- Compare photos and data side by side
- View and query photo series data to find photos that meet specific criteria
- View images along with loadings and associated data.
- Utilize images in reports
- Use images to effectively communicate options and results to colleagues and the public
- Easily generate and print reports and graphs

The CrownMass program facilitates:

- The calculation of the loading of foliage and woody biomass in tree species from plot data consisting of a minimum of tree species, tree diameter breast high, tree height, tree canopy ratio and tree structural stage.
- The calculation and display of the vertical fuel profile within tree crowns by one-foot segments.
- The estimation of crown fire assessment parameters such as stand height, canopy base height and canopy bulk density.
- The calculation of potential fire behavior and first order fire effects.



As you are aware, Fire Program Solutions, LLC and Acacia Services have been developing aids and tools to assist decision-making by wildland fire managers. To aid emergency coordination personnel, we have developed Dispatchers' Clock (Version 2.19). A complimentary copy of Dispatchers' Clock is enclosed for your use. Dispatchers' Clock allows emergency management personnel to track up to 30 aircraft or "alarms" reminding them to perform critical tasks "on time." Dispatchers' Clock will:

- Set alarms for field unit safety checks, flight following, and general reminders
- Logging and record events and locations in a logbook automatically
- Let up to 30 alarms with tiled alert windows
- Provide safety check-in and tracking features
- Accurately calculate travel times in local and Zulu time
- Display sunrise and sunset times. Plus, display and print yearly sunrise and sunset tables
- Provides expanded online Help
- Is year 2000 compliant
- Synchronize your computer's clock with a master Internet clock (National Bureau of Standards, etc.)



The enclosed CD-ROM contains installation files for FMAPlus and Dispatchers' Clock. The registration numbers for each FMAPlus and Dispatchers' Clock are on the inside of the CD-ROM jewel case cover.

To facilitate determination of environmental inputs to the CrownMass program, we have included an electronic copy of the Users' Guide and installation files for the FireFamilyPlus program. Also to facilitate use of the BehavePlus program, we have included an electronic copy of the Users' Guide, installation files and tutorial files for this program. You may keep current on the update and status of the FireFamilyPlus and BehavePlus programs via the web site: <http://www.fire.org>.

We appreciate your comments and feedback. If you encounter problems, please contact us at 503-668-1390 or at the email address [dcarlton1@aol.com](mailto:dcarlton1@aol.com). Please visit our web site for information on FMAPlus and activities from Acacia Services and Fire Program Solutions LLC. We appreciate the opportunity to be in your support. Please give me a call if I can be of assistance.

## **Installation Instructions for FMAPlus**

Below is information on the installation process.

### **Note to Upgraders from FMAPlus 2**

If upgrading from FMAPlus 2 or earlier, there is no need to uninstall the previous version. FMAPlus 3 and previous versions of FMAPlus 2 can run concurrently on the same computer.

### **Installation of FMAPlus 3 from CD-ROM**

To install FMAPlus 3, insert the CD-ROM into a CD-ROM drive. Use Windows Explorer, to navigate to the FMAPlus3\_Setup.exe in the Setup\_FMAPlus\_3 folder on the CD-ROM. Double click on this file and follow the installation instructions on the screen. It is best to exit all applications running prior to program installation and to disable virus-checking programs.

### **Installation of FMAPlus 3 from Download**

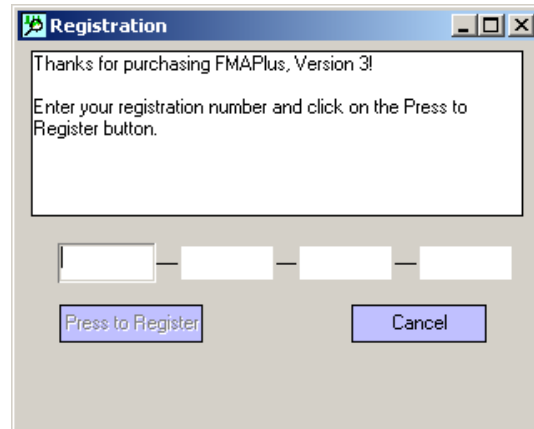
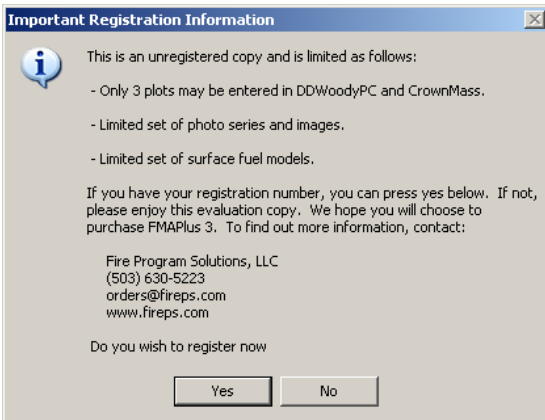
First, download of the fma300.exe file from the Internet. Using Windows Explorer, locate where the fma300.exe file resides and double click on it. Follow the installation instructions on the screen. It is best to exit all applications running prior to program installation and to disable virus-checking programs.

## Program Registration

Use the following process to register FMAPlus 3.

### Starting the Gateway Program and Registering

From the Windows Start, Programs menu select FMAPlus 3, Gateway. The screen below left will greet you. Select Yes and the screen below right will appear.



Enter your registration number. You will notice that when the complete number has been entered, the Press to Register button will become enabled (the lettering turns black). Click on the Press to Register button and the Gateway program will start.

If you select No to the “Do you wish to register now?” question, you will not be able to utilize all of the capabilities of the programs. You can register from within the Gateway program by selecting Register from the Help Main Menu.

## Activation and Deactivation of Photo Series

Before photos can be viewed or data used in DDWoodyPC or PSExplorer, the user needs to designate which photo series will be identified for use. This process is called Activating Photo Series.

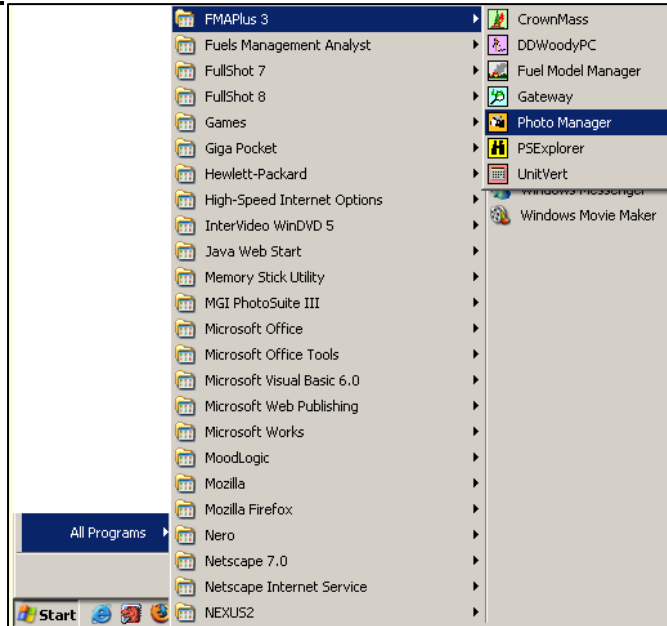
### The Initial Activation and Deactivation of Photo Series Books

The FMAPlus programs DDWoodyPC and PSExplorer utilize data describing each photo in the 20 published photo series that are included with the software. This data is contained in a database file titled photo3.mdb. By using the Photo Manager program in FMAPlus, the user can activate a photo series, deactivate a photo series and add custom local photo series. The process of activating a photo series triggers a flag with the software allowing the user to have this photo series available for use within DDWoodyPC and PSExplorer. Deactivating a photo series reverses this process. Deactivating a photo series does not remove the data from the photo3.mdb. Only the Demo Photo Series Books are installed during the initial setup of FMAPlus. Follow these steps to Activate and Deactivate of Photo Series.

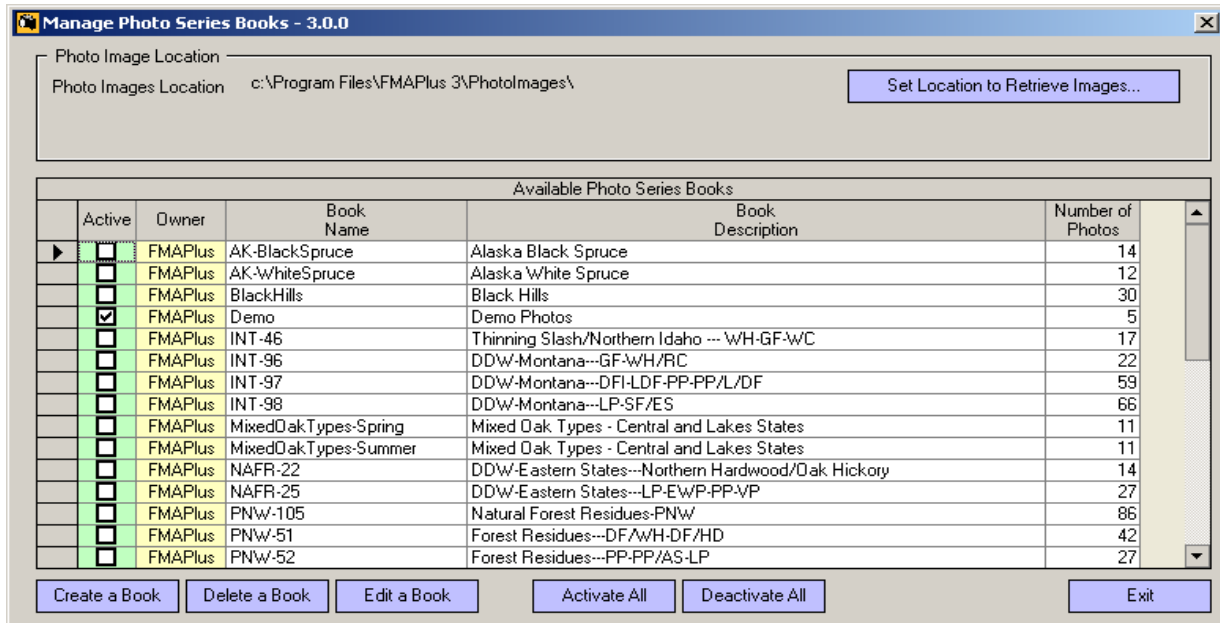
## Step 1 - Start the Photo Manager Program

Using the Windows desktop, go to start the Photo Manager program.

Click on **Start =>Programs=>FMAPlus 3=>Photo Manager**.

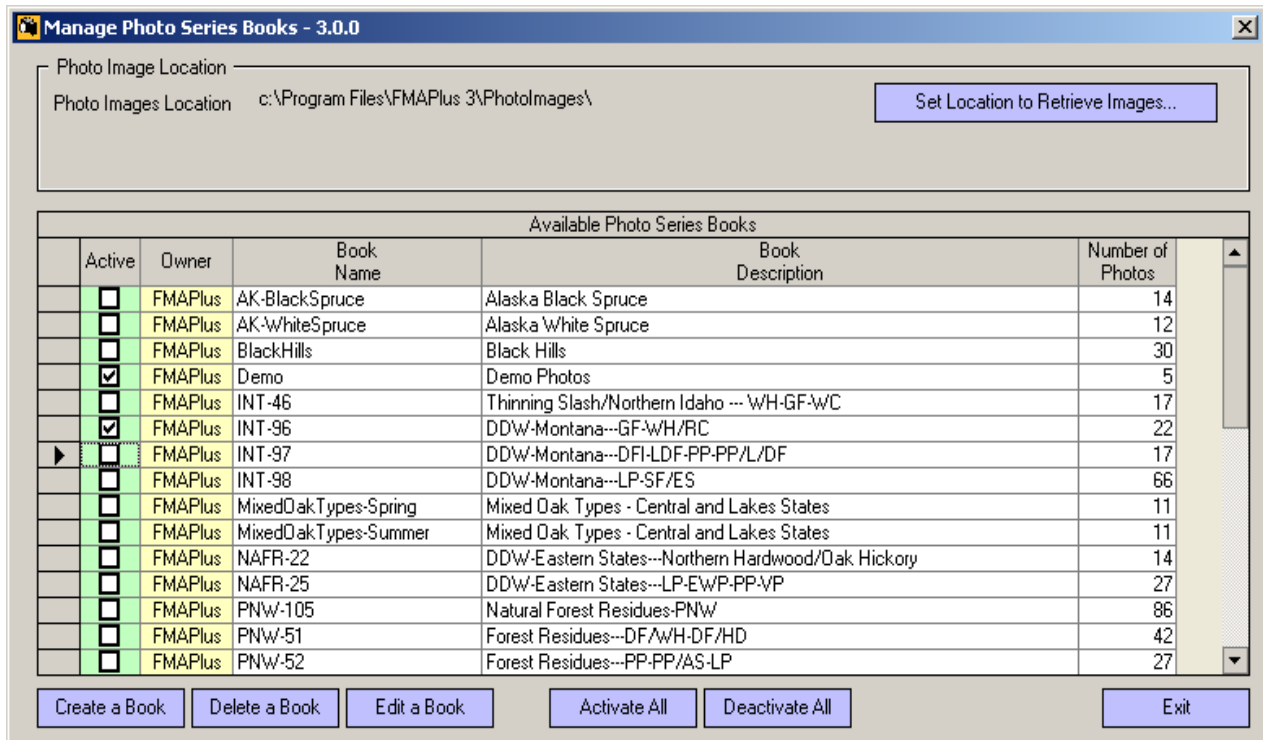


A screen similar to the one below will appear. The window lists all of the photo series contained in the photo3.mdb and also an initial default file path location for the photo series images. A complete list of each Photo Series in FMA is contained in the Users' Guides to DDWoodyPC and PSExplorer. Note that in the initial starting of the Photo Manager program, only the Demo photo series will be active.



## Step 2 - Activate Photo Series

To activate a photo series, click in the box in the Active column to the left of the photo series. When the box is first clicked, a check will appear and a pencil symbol will appear to the left of the box. Press the down arrow key on the keyboard. Notice the pencil symbol will disappear and there will be a right arrow just below where the pencil symbol was. This action records the activation of the photo series INT-96 to the photo3.mdb. The screen below shows photo series INT-96 and Demo active.



The user can activate all of the photo series at one time by clicking on the **Activate All** button.

Continue activating photo series until all of the desired photo series are activated.

## Step 3 - Deactivate the Demo Photo Series (Optional)

If the user wishes to deactivate a photo series, click in the box in the Active column to the left of the photo series. When the box is first clicked, the check will disappear and a pencil symbol will appear to the left of the box. Press the down arrow key on the keyboard. Notice the pencil symbol will disappear and there will be a right arrow just below where the pencil symbol was. This action records the deactivation of the selected photo series in the photo3.mdb.

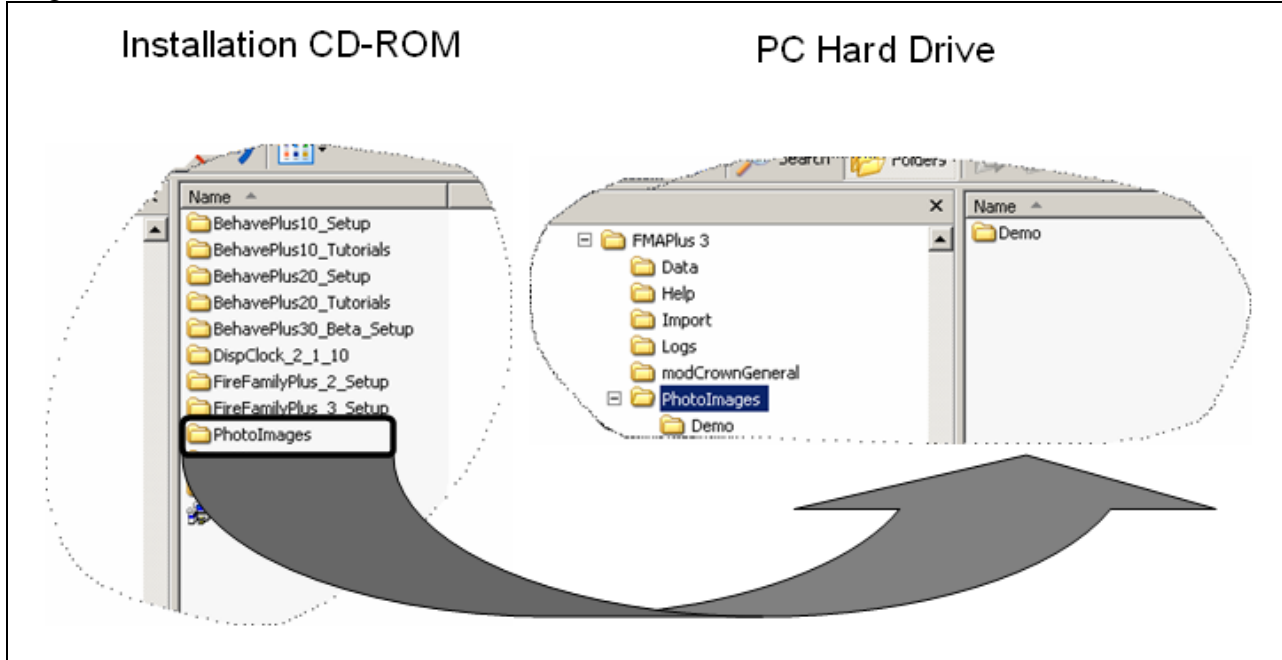
The user can deactivate all of the photo series at one time by clicking on the **Deactivate All** button.

At this time, the user may wish to deactivate the Demo photo series. This is a photo series with five photos that a user can use during evaluation the software and when the software is not registered.

**Step 4: (Optional) Copy Photo Graphics from the Installation CD-ROM to the Hard Drive**

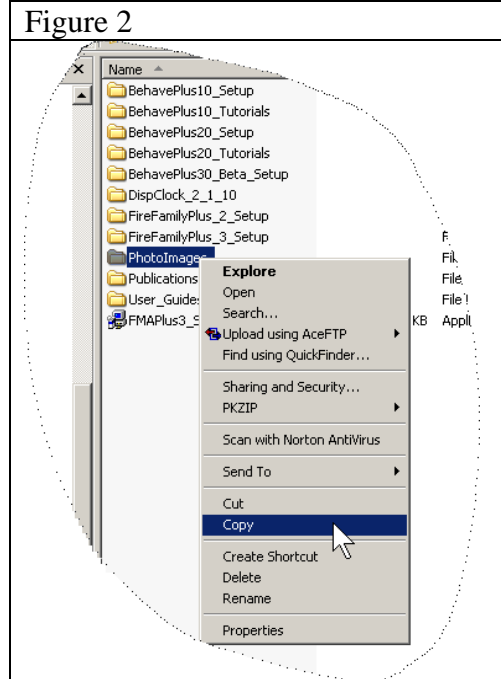
The graphic images for the photos and data plates used in the DDWoodyPC and PSExplorer programs are contained in a folder titled PhotoImages on the Installation CD-ROM.

Figure 1



**Step 4a: Place the PhotoImages Folder on the Installation CD-ROM onto the Window Clipboard**

Open Windows Explorer and navigate to the CR-ROM drive on the computer where the installation CD-ROM is located. Click on the CD-ROM drive letter in the left pane of Windows Explorer and the right pane should appear like the diagram on the left side of Figure 1. Perform a left mouse click on the PhotoImages folder in the right pane and the PhotoImages title will appear blue. Place the cursor over the blue area PhotoImages folder title. While keeping the cursor over the blue title, perform a right mouse click. A menu similar to the one in Figure 2 will appear. Perform a left mouse click on the Copy menu item. This will place the PhotoImages folder from the installation CD-ROM onto the Windows clipboard.



**Step 4b: Paste the PhotoImages Folder from the Windows Clipboard to the FMAPlus 3 Installation Folder on the Computer Hard Drive**

In Windows Explorer, navigate the folder on the computer hard drive where FMAPlus 3 is installed. The default installation location is:

C:/Program Files/FMAPlus 3/

Click on the + to the left of the FMAPlus 3 folder name in the left pane of Windows Explorer. It will change to a – and the folder inside of the FMAPlus 3 folder will be displayed. Perform a left mouse click on the FMAPlus 3 folder in the left pane and the FMAPlus 3 title will appear blue. Place the cursor over the blue area of the FMAPlus 3 folder title. While keeping the cursor over the blue title, perform a right mouse click. A menu similar to the one in Figure 3 will appear. Perform a left mouse click on the Paste menu item. Since there is already a PhotoImages folder inside of FMAPlus 3 folder, Windows will display a dialog box asking youn if you wish to replace the PhotoImages in the FMAPlus 3 folder with this new one from the installation CD-ROM.

Answer Yes to the question and wait for the copy and paste function to be completed.

When the copying is complete, perform a left mouse click on the PhotoImages folder inside of the FMAPlus 3 folder on the left pane of Windows Explorer. The right pane should appear similar to the graphic in Figure 4.

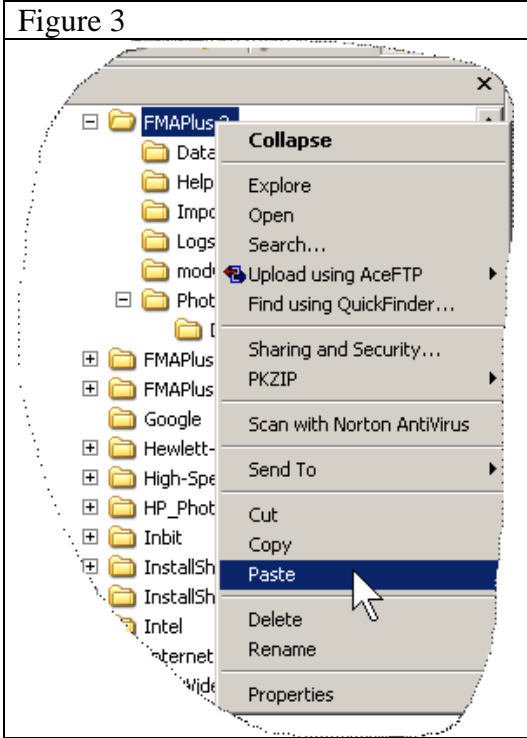
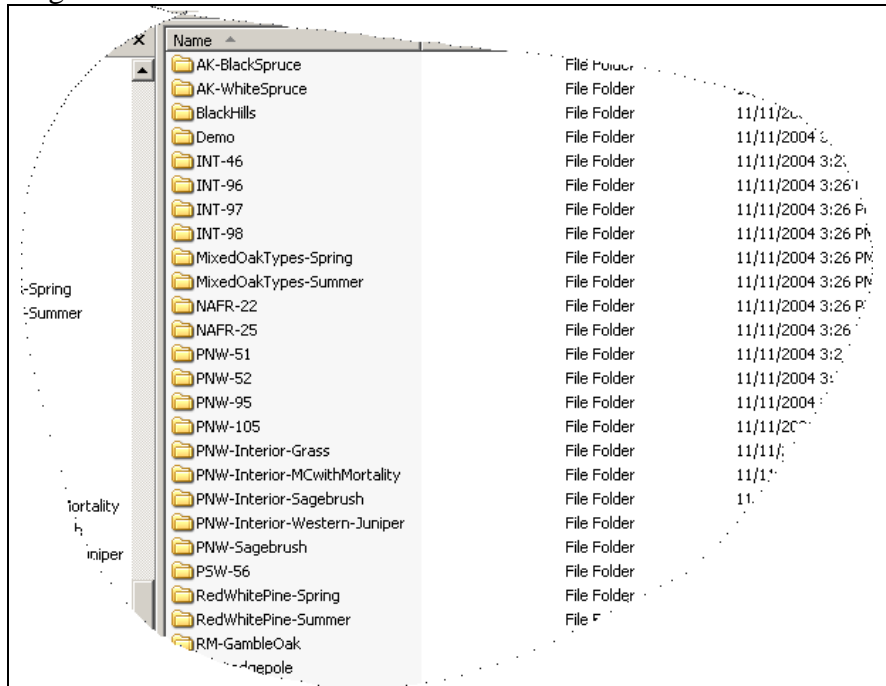


Figure 4



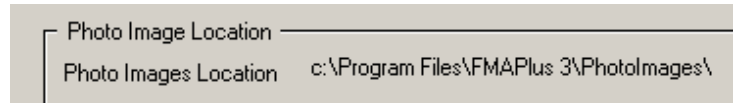
### **Step 5: Set the Photo Images Directory**

All of the photo images distributed with FMAPlus are installed to the PhotoImages folder in the folder where FMAPlus 3 was installed. The path to the PhotoImages folder is set on program installation.

In this step, the user will verify that the path to the PhotoImages folder is correctly set. If it is not, the process to correctly set the path will be described. To check the path currently set to the PhotoImages folder, start the Photo Manager program by clicking on:

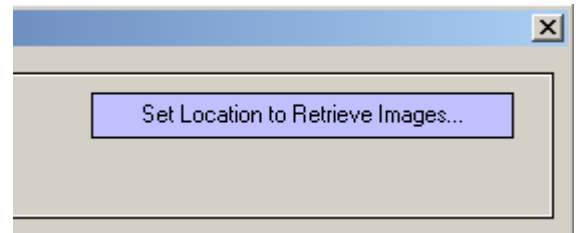
**Start =>Programs=>FMAPlus 3=>Photo Manager**

In the upper left part of the Photo Manager program screen, the Photo Images Location is displayed (see right).

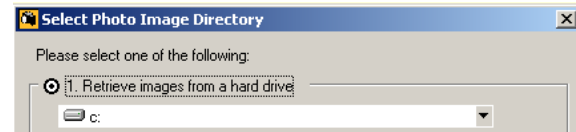


The default path is c:\Program Files\FMAPlus 3\PhotoImages\.

If the path is not correctly set to the folder where FMAPlus 3 is installed, click on the **Set Location to Retrieve Images** button located in the upper right corner of the screen.



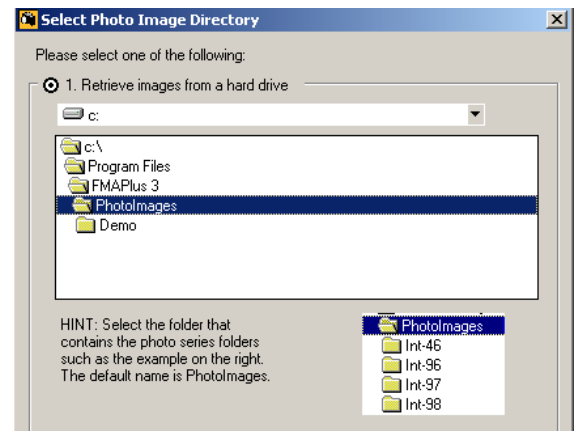
A dialog will appear with the top part appearing as in the figure to the right.. Click on the radio button at the top titled **1. Retrieve images from a hard drive**. Select the hard drive letter from the pulldown just below this title.



Navigate to the file location where the PhotoImages folder resides. The default installation location is:

C:\Program Files\FMAPlus

In this folder, a PhotoImages subfolder has been created upon program installation. Select this folder by double clicking on it or the PhotoImages folder that you have created at a different location. If the default folder location is selected, the dialog will appear as shown in the figure at the right. Click on the **OK** button and the dialog will close. Check the top of the dialog to verify the path to the PhotoImages is defined correctly. Exit the Photo Manager program by clicking on the **Exit** button.



## **Storing the Installation CD**

The installation CD-ROM jewel case contains the program registration number. Program updates frequently occur and upgrading requires the registration number.

The CD-ROM contains the photo series graphics files. Unless these graphics files are copied to the computer's hard drive, the CD-ROM will be needed when using the photo series option in DDWoodyPC and PSExplorer. Hence, store the installation CD-ROM in a known and safe place. Also note that if FMAPlus is installed on a laptop computer for use at a training session, it will be necessary for the user to take the installation CD-ROM and Users' Guides with them to the course.

## **Updating Program Files**

Due to program enhancements and bug fixes, it may be necessary for the user to update certain files within FMAPlus. A high percentage of time, the solution is for the user to obtain a copy of the program files (exe files) with enhancements or bugs fixed. These files can be downloaded the Internet (<http://www.fireps.com/fmanalyst3/fmasupport.htm>).

### **The FMAPlus 3 Web Page**

The address for this page is <http://www.fireps.com/fmanalyst3/index.htm>. This page provides general information on the programs within the FMAPlus.

### **The FMAPlus 3 Support Web Page**

The address for this page is <http://www.fireps.com/fmanalyst3/fmasupport.htm>. This is where the user can download copies of program files and PDF versions of the Users' Guides for the programs.

### **The FMAPlus 3 Problems and Fixes Web Page**

The address for this page is <http://www.fireps.com/fmanalyst3/problemfixes.htm>. Each time a problem is encountered and solution implemented, it is documented on this web page. Hence if the user encounters a problem, it is recommended that a visit to this web page will allow the user to determine if the problem being encountered has occurred in the past and been fixed. Directions are provided on how to implement a solution to the problem.

### **The FMAPlus 3 Download Web Page**

The address for this page is <http://www.fireps.com/fmanalyst3/download.htm>. From this page, the user can download a zip file (fma300.exe) with a complete set of program installation files. Extracting this zip file into a Temp folder will make these files available. Installation follows the process described in the Installation from Download section of this document. Note that only the DEMO photo images files are installed using this program installation file. A complete set of photo series graphics files is only available from the installation CD-ROM.



## Updating Program File Options

The update process can be completed via the Internet. Please contact technical support if you are not able to update using the Internet. We will be glad to send a new program installation CD-ROM for the cost of handling and shipping. Be sure to enlist aid from a computer specialist at the local unit if desired or needed.

To update programs, there are two options. Option one is to replace program files selectively using downloads of these new files from the Internet. If all of the program versions are current except for the one or two programs, this option is recommend as the most efficient process.

Option two is to download the FMAPlus 3 program installation file and to re-install FMAPlus 3.

### Update Option One

Decide which files need to be updated by comparing the version number of each program file with the current version number listed on the Support Page. The version number is displayed on the splash screen when a program is started. The version number also appears on the screen displayed by clicking the **Help=>About** from the program's main menu. For some programs, there is no splash screen and the version number is listed on the first row of the program window.

To download a new program executable file (exe files), go to:

<http://www.fireps.com/fmanalyst3/fmasupport.htm>

Download the updated files to a Temp directory. Next, go to the folder where FMAPlus 3 is installed. As a backup, it is recommended the user copy the current version of the files being replaced to a folder the user's choice. This will allow the user to have a backup of these program files. If all goes well during the update process, the user will not need these files again.

Go to the Temp Directory where the downloaded update files reside and copy these new files to the FMAPlus 3 folder.



## **Update Option Two**

First, go to <http://www.fireps.com/fmanalyst3/download.htm> and download the installation file. The file that is downloaded is titled fma300.exe. Place it into a Temp folder and be sure to note that folder's location.

Note the folder where FMAPlus 3 currently is installed. You then should uninstall the current version of FMAPlus 3 on your computer using the Start, Settings, Control Panel, Add/Remove Programs menu.

Next perform a new installation of FMAPlus 3 to the same directory where FMAPlus 3 was installed before. Use the fma300.exe file you downloaded to do this. Use Windows Explorer to navigate to the Temp Directory where the fma300.exe file resides. Locate the file named fma300.exe and double click on it. Follow the instructions. Be sure to enlist aid from a computer specialist at the local unit if necessary. If installation is on a computer with Windows 2000, NT, XP, 7, 8 or 10 as the operating system, be sure to have administrator permission to perform program installations.

This will install all of the latest FMAPlus programs and system files. Registration will not need to be repeated.

